

Quick & Easy

**BOGE EasiFit
Airline Systems**



www.boge.co.uk

The BOGE EasiFit Airline System is your advanced airline solution

Using only quality aluminium piping and airtight connectors, the BOGE EasiFit Airline System is quick and Easi to install with no welding required. Corrosion, fire and UV resistance are also key benefits.



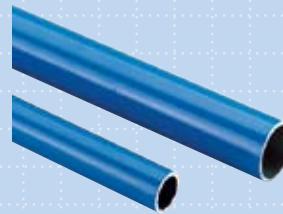
P 04-06
Fittings



P 07
Terminal Blocks



P 07
Tubes



P 08-09
Accessories

P 10-11
Assembly &
Pipe Size Calculation



It's so Easi to assemble



CUTTING
Use a tube-cutter to obtain a clean cut.



CHAMFERING
Chamfer the external part of the tube in order not to damage the sealing ring.



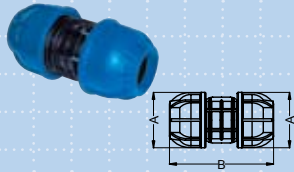
ASSEMBLY
Insert the tube and push it until it is completely home.



TIGHTENING
Tighten the coupling ring by hand or use the relevant tool.

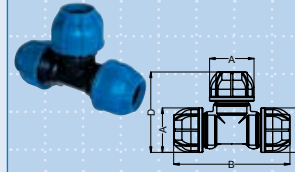
Fittings for Compressed Air

Equal Union



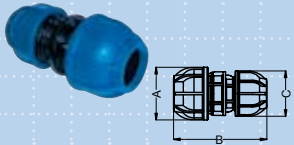
Code	Ø	A	B
R210.020.020	20 x 20	44	85
R210.025.025	25 x 25	52	97
R210.032.032	32 x 32	62	113
R210.040.040	40 x 40	72	129
R210.050.050	50 x 50	86,50	157
R210.063.063	63 x 63	105	182

Equal Tee



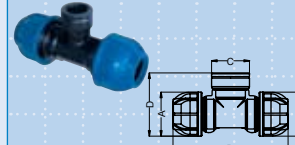
Code	Ø	A	B	C	D
R214.020.000	20 x 20 x 20	44	109,50		76,50
R214.025.000	25 x 25 x 25	52	132		93,50
R214.032.000	32 x 32 x 32	62	159,50		111
R214.040.000	40 x 40 x 40	72	182		127,50
R214.050.000	50 x 50 x 50	86,50	225		154
R214.063.000	63 x 63 x 63	105	262		182

Reducing Union



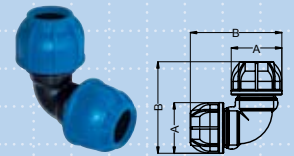
Code	Ø	A	B	C
R212.025.020	25 x 20	52	91	44
R212.032.025	32 x 25	62	103,50	52
R212.040.032	40 x 32	72	121	62
R212.050.040	50 x 40	86,50	145,50	72
R212.063.050	63 x 50	105	167	86,50

Female Tee



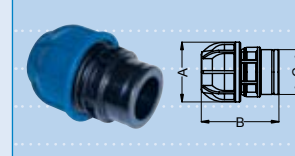
Code	Ø	A	B	C	D
R215.025.012	25 x 1/2" x 25	52	132	30	75
R215.032.034	32 x 3/4" x 32	62	159,50	37	85
R215.040.001	40 x 1" x 40	72	182	43	103
R215.050.112	50 x 1 1/2" x 50	86,50	225	62	121
R215.063.002	63 x 2" x 63	105	262	77	148

90° Equal Elbow



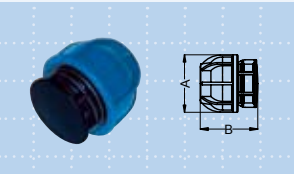
Code	Ø	A	B
R213.020.020	20 x 20	44	76
R213.025.025	25 x 25	52	92
R213.032.032	32 x 32	62	109
R213.040.040	40 x 40	72	127,50
R213.050.050	50 x 50	86,50	157,50
R213.063.063	63 x 63	105	184

Female Straight Connection



Code	Ø	A	B	C
R201.020.012	20 x 1/2"	44	60,50	30
R201.025.034	25 x 3/4"	52	69	37
R201.032.001	32 x 1"	62	81	43
R201.040.114	40 x 1 1/4"	72	92	54
R201.050.112	50 x 1 1/2"	86,50	105	62
R201.063.002	63 x 2"	105	122,5	77

End Cap



Code	Ø	A	B
R221.020.000	20	44	44,50
R221.025.000	25	52	53,50
R221.032.000	32	62	63
R221.040.000	40	72	68,50
R221.050.000	50	86,50	82,50
R221.063.000	63	105	94,50

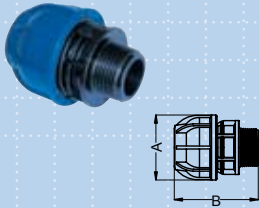
Aluminium Female Straight Connection



Code	Ø	A	B	C
R202.020.012	20 x 1/2"	44	60,50	30
R202.025.034	25 x 3/4"	52	69	37
R202.032.001	32 x 1"	62	81	43
R202.040.114	40 x 1 1/4"	72	92	54
R202.050.112	50 x 1 1/2"	86,50	105	62
R202.063.002	63 x 2"	105	122,5	77

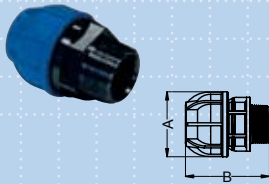
Fittings for Compressed Air

Male Straight Connection



Code	Ø	A	B
R211.020.012	20 x 1/2"	44	60
R211.025.012	25 x 1/2"	52	66,50
R211.025.034	25 x 3/4"	52	68
R211.032.001	32 x 1"	62	78,50
R211.040.001	40 x 1"	72	88,50
R211.040.114	40 x 1 1/4"	72	90
R211.050.112	50 x 1 1/2"	86,50	104
R211.063.002	63 x 2"	105	119

Aluminium Male Straight Connection



Code	Ø	A	B
R203.020.012	20 x 1/2"	44	60
R203.025.012	25 x 1/2"	52	66,50
R203.025.034	25 x 3/4"	52	68
R203.032.001	32 x 1"	62	78,50
R203.040.001	40 x 1"	72	88,50
R203.040.114	40 x 1 1/4"	72	90
R203.050.112	50 x 1 1/2"	86,50	104
R203.063.002	63 x 2"	105	119

Straight Connection with Union



Code	Ø	A
R220.020.012	20 x 1/2"	44
R220.025.034	25 x 3/4"	52
R220.032.001	32 x 1"	62
R220.040.114	40 x 1 1/4"	72
R220.050.112	50 x 1 1/2"	86,50
R220.063.002	63 x 2"	105

Straight Connection with Ball Valve



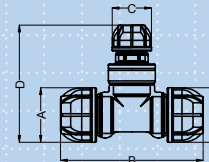
Code	Ø	A
R224.020.012	20 x 1/2"	44
R224.025.034	25 x 3/4"	52
R224.032.001	32 x 1"	62
R224.040.114	40 x 1 1/4"	72
R224.050.112	50 x 1 1/2"	86,5
R224.063.002	63 x 2"	105

3 Piece Connection with Ball Valve



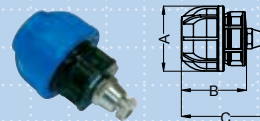
Code	Ø	A
R225.020.012	20 x 1/2"	44
R225.025.034	25 x 3/4"	52
R225.032.001	32 x 1"	62
R225.040.114	40 x 1 1/4"	72
R225.050.112	50 x 1 1/2"	86,50
R225.063.002	63 x 2"	105

Reducing Tees Connection



Code	Ø	A	B	C	D
R217.025.020	25-20-25	52	132	44	121
R217.032.020	32-20-32	62	159,5	44	132
R217.032.025	32-25-32	62	159,5	52	143
R217.040.020	40-20-40	72	182	44	150
R217.040.025	40-25-40	72	182	52	161
R217.040.032	40-32-40	72	182	62	169
R217.050.020	50-20-50	86,5	225	44	168
R217.050.025	50-25-50	86,5	225	52	179
R217.050.032	50-32-50	86,5	225	62	187
R217.050.040	50-40-50	86,5	225	72	196
R217.063.020	63-20-63	105	262	44	195
R217.063.025	63-25-63	105	262	52	206
R217.063.032	63-32-63	105	262	62	214
R217.063.040	63-40-63	105	262	72	223
R217.063.050	63-50-63	105	262	86,5	235

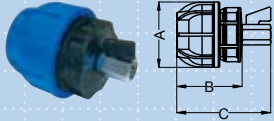
End Caps with Manual Vent Valve



Code	Ø	A	B	C
R218.020.014	20	44	44,5	64,5
R218.025.014	25	52	53,5	73,5
R218.032.014	32	62	63	83
R218.040.014	40	72	68,5	88,5
R218.050.014	50	86,50	82,5	102,5
R218.063.014	63	105	94,5	114,5

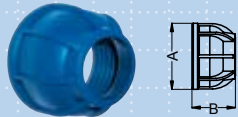
Fittings for Compressed Air

End Caps With Mini Ball Valve



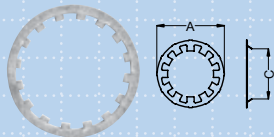
Code	∅	A	B	C
R219.020.014	20 x 1/4"	44	44,5	74,5
R219.025.014	25 x 1/4"	52	53,5	83,5
R219.032.038	32 x 3/8"	62	63	93
R219.040.038	40 x 3/8"	72	68,5	98,5
R219.050.038	50 x 3/8"	86,5	82,5	112,5
R219.063.038	63 x 3/8"	105	94,5	124,5

Coupling Ring



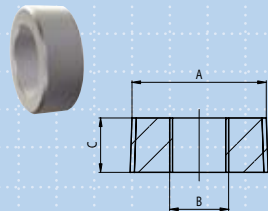
Code	∅	A
R209.020.000	20	44
R209.025.000	25	52
R209.032.000	32	62
R209.040.000	40	72
R209.050.000	50	86,50
R209.063.000	63	105

O-Ring



Code	∅	A	B	C
R216.020.000		31		20,2
R216.025.000		38,8		25,2
R216.032.000		48,2		32,5
R216.040.000		56,3		40,5
R216.050.000		69		50,5
R216.063.000		85,1		63,2

Aluminium Reduction



Code	∅	A	B	C
R232.034.012		3/4"	1/2"	14,5
R232.001.012		1"	1/2"	17
R232.114.012		1 1/4"	1/2"	19
R232.112.012		1 1/2"	1/2"	19
R232.112.001		1 1/2"	1"	19
R232.002.012		2"	1/2"	23
R232.002.001		2"	1"	23
R232.002.112		2"	1 1/2"	23

1/2" BSP Threaded Take off Saddles



Code	∅
QSB2512	25
QSB3212	32
QSB4012	40
QSB5012	50
QSB6312	63

(1/2" BSP) for branch lines. G female thread.

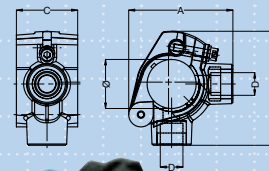
3/4" BSP Threaded Take off Saddles



Code	∅
QSB2534	25
QSB3234	32
QSB4034	40
QSB5034	50
QSB6334	63

(3/4" BSP) for branch lines. G female thread.

BSP Twin Take off Coupling



Code	∅	A	B	C	D
R208.025.040	25	85	93	50	1/2"
R208.032.040	32	85	93	50	1/2"
R208.040.040	40	85	93	50	1/2"
R208.050.063	50	134	146,5	80	1"
R208.063.063	63	134	146,5	80	1"

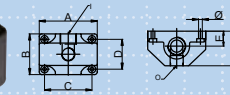
Whatever your EasiFit System requirements,
FREEPHONE 0800 318104 or visit
www.boge.co.uk for more information.

Terminal Blocks For Compressed Air (Max 16 Bar)

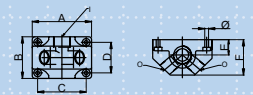
Code	Use		Size		Drilling				Volume	
	I	O	A	B	C	D	∅	E	F	
089.800.202	G 1/2"	G 1/2"	85,5	60	70	44	5,5	22	51	
089.800.203	G 1/2"	G 3/4"	85,5	60	70	44	5,5	22	51	
089.800.204	2xG 1/2"	G 1/2"	85,5	60	70	44	5,5	22	51	
089.800.205	2xG 1/2"	G 3/4"	85,5	60	70	44	5,5	22	51	
089.800.206	3xG 1/2"	G 1/2"	85,5	60	70	44	5,5	22	51	
089.800.207	3xG 1/2"	G 3/4"	85,5	60	70	44	5,5	22	51	
089.800.400			85,5	60	20	70	6	44		
R231.012.012	G 1/2"	4 x 1/2"	105	70	91	56	7	35	81,5	
R231.034.012	G 3/4"	4 x 1/2"	105	70	91	56	7	35	81,5	



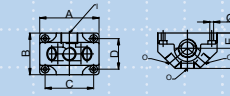
089.800.300
Manual condensation drain
available on request on the following models:
089 800 202 / 203 / 204 / 205 / 206 / 207



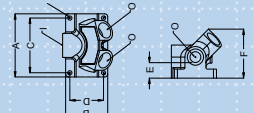
089.800.202/089.800.203



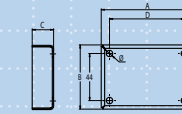
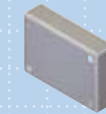
089.800.204/089.800.205



089.800.206/089.800.207



R231.012.012/R231.034.012



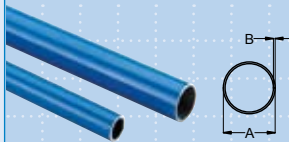
089.800.400 Spacer usable with the models:
089.800.202 / 203 / 204 / 205 / 206 / 207



089.800.350 Manual condensation drain
available on request on the following models:
R231.012.012 / R231.034.012

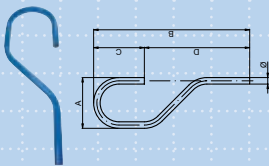
Tubes For Compressed Air

Aluminium Tube



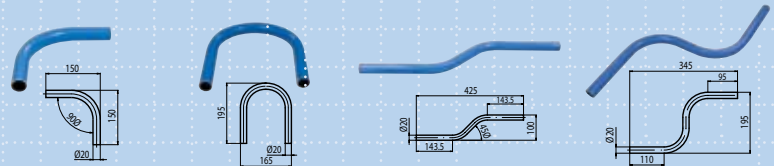
Code	A	B	Length
059.020.017	20	1,5	4 m
059.025.022	25	1,5	4 m
059.032.029	32	1,5	4 m
059.040.037	40	1,5	4 m
059.050.046	50	2	4 m
059.063.059	63	2	4 m

Drop Bends



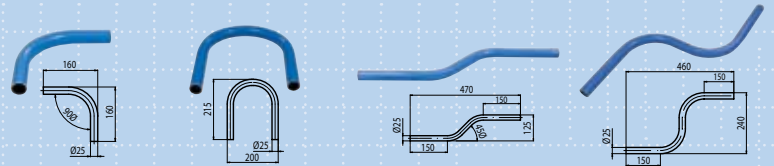
Code	∅	A	B	C	D
059.015.100	15	110	435	102,5	332,5
059.020.100	20	160	500	160	340
059.022.100	22	160	550	155	395
059.025.100	25	195	600	195	405

Special Bends ∅ 20



Code 059.020.101 | 059.020.102 | 059.020.103 | 059.020.104

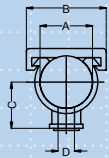
Special Bends ∅ 25



Code 059.025.101 | 059.025.102 | 059.025.103 | 059.025.104

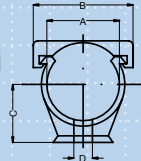
Accessories For Compressed Air

Monoklip Brackets



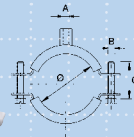
Code	A	B	C	D
HCKM6020	20	32	22	M6
HCKM6025	25	39	22	M6
HCK20/8	20	32	22	M8
HCK25/8	25	39	22	M8
HCKP020	20	32	22	Ø5,5
HCKP025	25	39	22	Ø5,5

Monoklip Brackets



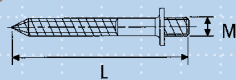
Code	A	B	C	D
HCKM6032	32	45	28	M6
HCKM6040	40	55	32	M6
HCKM6050	50	68	36	M6
HCKM6063	63	82	40	M6
HCKM8032	32	45	28	M8
HCKM8040	40	55	32	M8
HCKM8050	50	68	36	M8
HCKM8063	63	82	40	M8

Collar for Tube Fixation



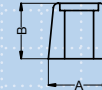
Code	Ø	A	B	C
R230.020.000	20	M8/M10	M6	20
R230.025.000	25	M8/M10	M6	20
R230.032.000	32	M8/M10	M6	20
R230.040.000	40	M8/M10	M6	25
R230.050.000	50	M8/M10	M6	25
R230.063.000	63	M8/M10	M6	25

Fixing Screws



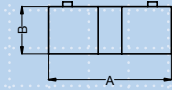
Code	M	L
R230.000.002	M8	L=50

Wedges for Monoklip Brackets



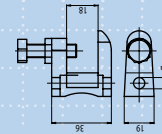
Code	A	B
CALE1225	26	23

Wedges for Monoklip Brackets



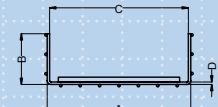
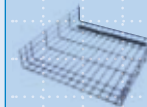
Code	A	B
CALE3263	52	20

Clip Strirrup on Beams



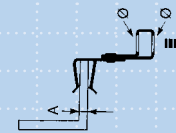
Code	Ø
R234.000.001	9
R234.000.002	M8

Pipe through (L=1965)



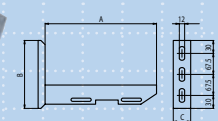
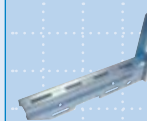
Code	A	B	C	D
090.305.000	306	104,5	286	5
090.505.000	546	104,5	526	5

Beam Clips



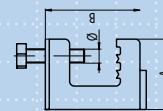
Code	A	B
R233.000.001	11	3/8
R233.000.002	11	8/14
R233.000.003	11	14/20

Wall Mounting Bracket



Code	A	B	C
R228.170.000	170	195	50
R228.320.000	320	195	50
R228.520.000	520	195	50

Beam Clamps



Code	Ø	A	B
R230.000.001	M6	30	34

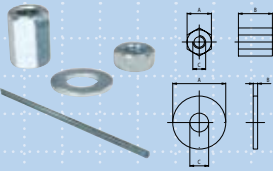
Coupling Kit For Pipe Tray



Code
090.080.100

Assembly Accessories

Connection Accessories



Code	A	B	C
R230.000.003	11	30	M8
R230.000.004	13	6,5	M8
R230.000.005	24	8,5	2

Plated iron studding M8 L=1000 galvanised. Code R230.000.006

Flexible Tube L. 500mm



Tubes not-suitable for the compressor outlet connection.

Code	Ø	A	Length
R226.012.500	½"	½"	500
R226.034.500	¾"	¾"	500
R226.001.500	1"	1"	500
R226.114.500	1 ¼"	1 ¼"	500
R226.112.500	1 ½"	1 ½"	500
R226.002.500	2"	2"	500

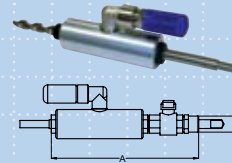
Flexible Tube L. 1500m



Tubes not-suitable for the compressor outlet connection.

Code	Ø	A	Length
R227.012.150	½"	½"	1500
R227.034.150	¾"	¾"	1500
R227.001.150	1"	1"	1500
R227.114.150	1 ¼"	1 ¼"	1500
R227.112.150	1 ½"	1 ½"	1500
R227.002.150	2"	2"	1500

Pressurised Tap-in tool



Code	Ø	A
R208.012.040	½"	202
R208.001.063	1"	294

Strap Spanner 40-120mm Tightening



Code	Ø
R200.020.063	40 to 120

Adjustable Reamer



For tubes from 50 to 160

Code	Ø
TEMPE50315	50 to 63

Deburring Cone up to Ø 50



For the external bevelling and the internal smoothing of tubes up to Ø 50 mm

Code
CONE050

C Spanner For Coupling Rings



Code	Ø Coupling Ring
R200.035.050	20
R200.050.080	25-32-40
R200.080.120	50-63

Tube Cutter



with deburring tool

Code	Ø
CT1240	12 to 35
CT1263	12 to 63

Deburring Tool



Code	Ø
R230.000.007	All

Specifications

Tubes

- Material: **EN AW-6060 T6 Aluminium**
- Treatment: **Chrome finish, internal & external**
- Paint: **RAL 5015 Electrostatic Painting**
- Use: **Compressed Air/Vacuum distribution**
- Tube Length: **4 M (Standard) – 6 M (on request)**
- Tube Quality: **Calibrated Extrusion**
- Temperature: **From -20°C to +70°C**
- Pressure: **From -0.8 to +15 Bar**
- Compatible Fluids: **Compressed Air – Vacuum – Water**

Fittings

- Body: **Black Nylon**
- Coupling Ring: **Blue Nylon**
- Cutting Ring: **AISI 301 Stainless Steel**
- Sealing: **NBR O-ring**
- Temperature: **From -20°C to +70°C**
- Pressure: **From -0.6 to +12.5 Bar**
- Compatible Fluids: **Compressed Air – Vacuum – Water**

Your EasiFit benefits

- **Easi and rapid to install**
- **Reduced pressure drop**
- **Corrosion resistance**
- **Reusable**
- **Fire-resistance**
- **UV-resistant**
- **Good shock resistance**
- **No welding required**
- **Modern design**

Aluminium Tubes For Compressed Air

Primary aluminium extruded tubes EN AW-6060 T66
(AL Mg Si 0.5). Electrostatic painting RAL 5015.

Chemical Composition

ALLOY	Cu	Fe	Mn	Mg	Si	Zn	Cr	Ti	Al
6060	0.10	0.10-0.30	0.10	0.35-0.6	0.3-0.6	0.15	0.05	0.10	Rest

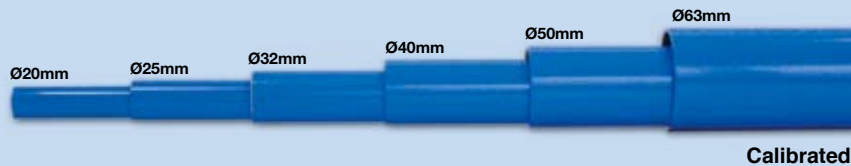
Minimum Mechanical Specifications

ALLOY	Ultimate tensile stress	Yield point	A % Stretch	HB Hardness
6060	R _m 215 N/mm ²	R _{p0.2} 160 N/mm ²	8	75

Specific weight **2,70 Kg/dm³**

Elastic Modulus: **69.000 N/mm²**
 Expansivity: **20÷100°Cx10⁻⁶/°C**
 Electrical Resistance: **0.033 Ωmm²/m**
 Thermal Conductivity: **210 W/mK**
 Melting Temperature: **615° C-655° C**
 Calibrated Extrusion
 Internal Chrome Finish

Pipe Diameter



Size	7 bar delivery	Code
Ø20 x 17	1.477 L/min.	059020017
Ø25 x 22	2.727 L/min.	059025022
Ø32 x 29	5.504 L/min.	059032029
Ø40 x 37	10.054 L/min.	059040037
Ø50 x 46	16.538 L/min.	059050046
Ø63 x 59	30.214 L/min.	059063059

Assembly Instructions

R-RANGE FITTING SIZES DN 20 – 25 – 32 – 40 – 50 – 63

1. Check that all connection parts are correctly assembled. Check the orientation of the clip; if it is incorrectly assembled the tightness of the connection cannot be guaranteed (See Table A).
2. Before inserting the tube into the fitting rotate the light-blue coupling ring against the antiscrew tooth and no further.
3. The tube must be inserted into the fitting until the tube bottoms inside. This can be checked by previously marking on the tube the length «L» indicated in Table B.
4. Once the tube has been correctly inserted into the fitting, rotate the coupling ring completely over the antiscrew tooth. To best carry out this operation it is advisable to use the tools indicated in the present catalogue.
5. Table B illustrates the tightening force needed for each fitting size (N/m) in order to guarantee optimal pneumatic and mechanical sealing results.
6. Table C illustrates the correct installation. Misalignment of more than 10° from the horizontal line may compromise the pneumatic tightness of the fittings.
7. Carefully refer to the specifications indicated in the present catalogue as to compatibility with chemical substances that could be present in the tubes.
8. BOGE will not be responsible for any damage caused by improper use of their products and/or non-compliance with the instructions indicated in the present catalogue.

WARNING: to avoid seal damage, chamfer tube ends before inserting them into the fittings.

How to Calculate a Network Pipe Size

2.1 Fitting pressure drops

Although fittings are smooth inside and have the same tube inside diameter they nonetheless represent a resistance to air flow, particularly when tubes change direction as in the case of bends, tee-unions and reducers. Table E refers to pressure drops caused by fittings. Every fitting or change of direction corresponds to the metres of tube indicated in this table.

2.2 Network pipe sizing

Once the compressed air consumption (l/min) and the sustainable pressure drop have been calculated you can refer to Table D to identify the correct tube dimension. After having examined the plant and considered the changes of direction as well as the pressure drop of fittings you can then refer to Table E to complete and correct previous calculations.

TABLE A

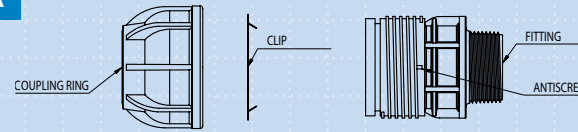


TABLE B

ND	20	25	32	40	50	63
N/m	9 ÷ 11	11 ÷ 13	12 ÷ 15	15 ÷ 17	17 ÷ 20	18 ÷ 22
L = mm	45	55	60	70	85	95

TABLE C

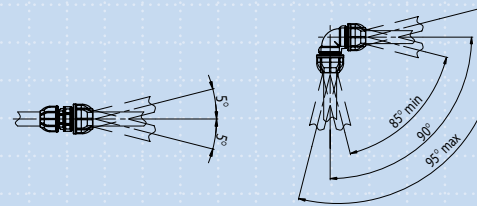


TABLE D

Maximum delivery l/m (standard reference atmosphere)

Real Pressure (bar)	Outside diameter (mm)					
	20	25	32	40	50	63
1	260	460	900	1600	2950	5400
3	660	1250	2400	4420	7950	15100
5	1200	2300	4100	7240	13000	24200
7	1650	2980	5660	10150	18300	33570
10	2415	4320	8190	14580	26540	48840
12	2900	5350	10220	18460	33570	61780

TABLE E

Equivalent tube lengths of the same diameter (m)

Tube outer diameter	Couplings	Elbows 90°	Tee-unions on a straight line	Tee-unions on a line deviation	Reducers
20	0,15	0,40	0,20	0,60	0,20
25	0,20	0,50	0,30	0,80	0,25
32	0,25	0,60	0,40	1,10	0,35
40	0,30	0,80	0,50	1,40	0,45
50	0,40	0,95	0,70	1,70	0,60
63	0,50	1,25	0,95	2,30	0,75

Quality: Made in Germany



We at BOGE plan, develop, manufacture, distribute and service compressed air supply systems for customers in the field of plant construction, industry and workshops

Our range of products and services include the following;

- Planning and engineering of compressed air systems
- Oil-free screw compressors and screw compressors with oil injection cooling
- Oil-free and oil-lubricated piston compressors
- Compressed air purification
- Compressed air distribution and storage
- Compressed air accessories
- Compressed air service
- Remote system control and display

We are one of the market leaders in our sector. We are further represented worldwide through our own branch offices, subsidiaries and service partners.



BOGE Compressors Ltd, Rastrick Common, Brighouse, West Yorkshire HD6 3DR
T: +44 (0) 1484 719921 F: +44 (0) 1484 712516 E: uk@boge.com W: www.boge.co.uk



Certificate number 1524